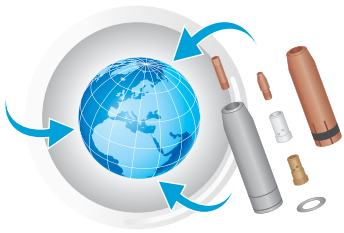
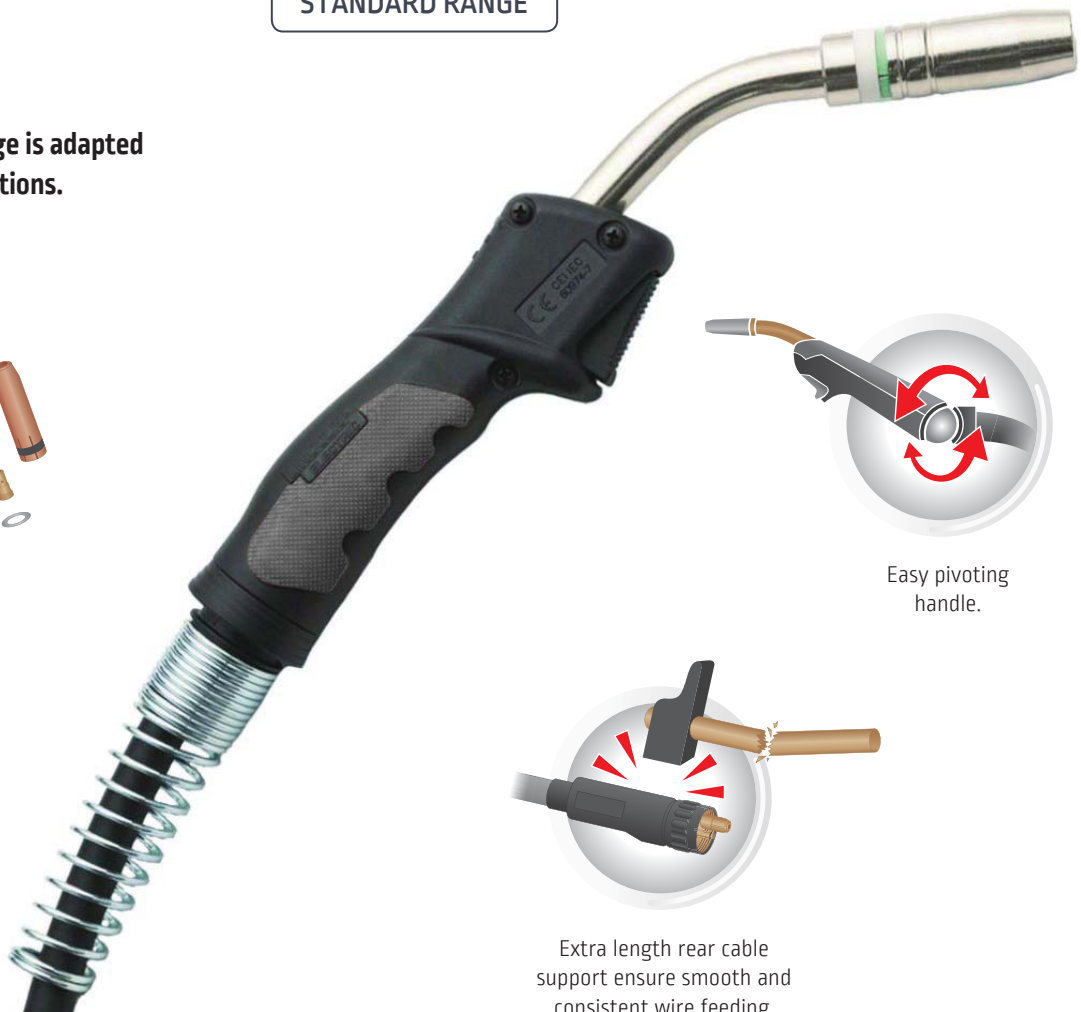


MIG/MAG TORCHES

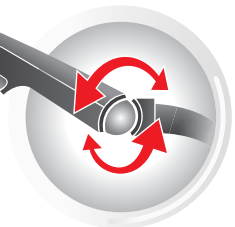
LGS2

STANDARD RANGE

Simple and reliable, this range is adapted to the most common applications.



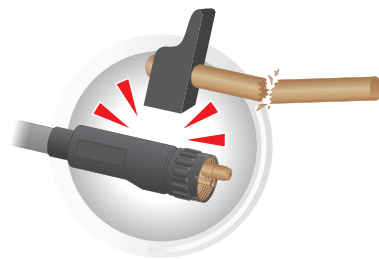
Wear parts compatible with the most common standard in Europe.



Easy pivoting handle.



Extra-flexible cable.

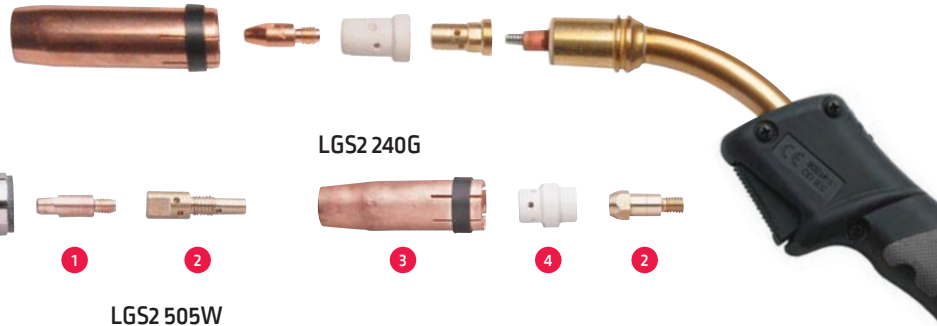


Extra length rear cable support ensure smooth and consistent wire feeding.

MODEL	AIR COOLING				WATER COOLING	
	LGS2-150G	LGS2-250G	LGS2-240G	LGS2-360G	LGS2-505W	
Duty cycle (CO ₂ shielding gas)	180 A @ 60%	230 A @ 60%	250 A @ 60%	330 A @ 60%	500 A @ 100%	
Applications	Thin plates, automotive industry	Thin plates, light fabrication	Thin plates, light fabrication	Vessel manufacture, steel structures	Heavy duty, high production	
Wire diameter	Up to 1.0 mm	Up to 1.2 mm	Up to 1.2 mm	Up to 1.6 mm	Up to 2.4 mm	
Original equipment	Contact tip	0.8 mm	1.0 mm	1.0 mm	1.2 mm	1.2 mm
	Conical nozzle	12 mm	15 mm	12.5 mm	16 mm	16 mm
To order						
3 m	W10429-15-3M	W10429-25-3M	W10429-24-3M	W10429-36-3M	W10429-505-3M	
4 m	W10429-15-4M	W10429-25-4M	W10429-24-4M	W10429-36-4M	W10429-505-4M	
5 m	W10429-15-5M	W10429-25-5M	W10429-24-5M	W10429-36-5M	W10429-505-5M	

MIG/MAG TORCHES

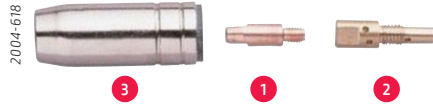
Wear parts for LGS2 torches



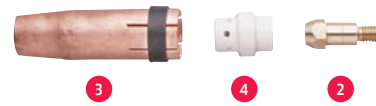
LGS2 150G



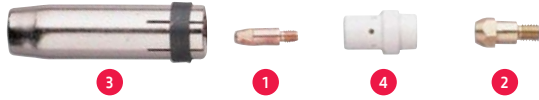
LGS2 250G



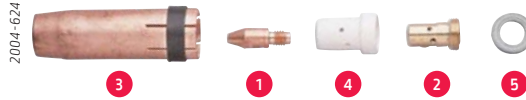
LGS2 240G



LGS2 360G



LGS2 505W



	Ø mm	1 Contact tip	2 Contact tip holder	3 Nozzle	Nozzle spring	Steel or PTFE liner			Aluminum kit (PTFE/bronze) liner			4 Insulating diffuser			
						3 m	4 m	5 m				Standard	High temperature	Ceramic	
LGS2 150G	M 6 x 25	W00010820 W00010821 WP10440-09 W00010822	W000277903	W00010787 (Con. D10) W00010786 (Con. D12.5) W00010788 (Cyl. D16) WP10468 (Innershield)	W000277448	W00010730 (blue)	W00010731 (blue)	W00010732 (blue)	-	-	-	-	-	-	-
						W00010733 (red)	W00010734 (red)	W00010735 (red)	-	-	-	-	-	-	
						WP10422-3M (blue)	WP10422-4M (blue)	WP10422-5M (blue)	-	-	-	-	-	-	
						W00010736 (red)	W00010737 (red)	W00010738 (red)	WP10419-3M (red)	WP10419-4M (red)	WP10419-5M (red)	-	-	-	
LGS2 250G	M 6 x 25	W00010826 WP10441-09 W00010827 W00010828 WP10441-08A W00010850 W00010851	W00010720	W00010791 (Con. D11) W00010790 (Con. D15) W00010792 (Cyl. D20)	W000277477	W00010730 (blue)	W00010731 (blue)	W00010732 (blue)	-	-	-	-	-	-	
						W00010733 (red)	W00010734 (red)	W00010735 (red)	-	-	-	-	-	-	
						WP10422-3M (blue)	WP10422-4M (blue)	WP10422-5M (blue)	-	-	-	-	-	-	
						W00010736 (red)	W00010737 (red)	W00010738 (red)	WP10419-3M (red)	WP10419-4M (red)	WP10419-5M (red)	-	-	-	
LGS2 240G	M 6 x 25	W00010820 W00010821 WP10440-09 W00010822 WP10440-12 WP10440-08A WP10440-10A WP10440-12A	WP10455-1	WP10461-9 (Con. D10) WP10461-4 (Con. D12.5)	-	W00010730 (blue)	W00010731 (blue)	W00010732 (blue)	-	-	-	WP10404-STD	WP10404-HT	WP10404-CR	
						W00010733 (red)	W00010734 (red)	W00010735 (red)	-	-	-	-	-	-	
						WP10422-3M (blue)	WP10422-4M (blue)	WP10422-5M (blue)	-	-	-	-	-	-	
						W00010736 (red)	W00010737 (red)	W00010738 (red)	WP10419-3M (red)	WP10419-4M (red)	WP10419-5M (red)	-	-	-	
LGS2 360G	M 8 x 30	W00010834 W00010835 W00010836 W000262703 W00010837 WP10445-08A W00010853 W00010854 W00010855	W00010722 (M6)	W00010795 (Con. D12) W00010794 (Con. D16) W00010796 (Cyl. D20)	-	W00010730 (blue)	W00010731 (blue)	W00010732 (blue)	-	-	-	W00010780	W00010781	W00010782	
						W00010733 (red)	W00010734 (red)	W00010735 (red)	-	-	-	-	-	-	
						W00010867 (yellow)	W00010868 (yellow)	W00010869 (yellow)	-	-	-	-	-	-	
						WP10422-3M (blue)	WP10422-4M (blue)	WP10422-5M (blue)	WP10419-3M (red)	WP10419-4M (red)	WP10419-5M (red)	-	-	-	
LGS2 505W	M 8 x 30	W00010834 W00010835 W00010836 W000262703 W00010837 WP10445-08A W00010853 W00010854 W00010855	W00010724 WP10456-6 (Heavy duty)	W00010798 (Con. D14) W00010797 (Con. D16) W00010799 (Cyl. D20)	-	W00010730 (blue)	W00010731 (blue)	W00010732 (blue)	-	-	-	W00010783	W00010784	W00010785	
						WP10410-3M (uncoated)	WP10410-4M (uncoated)	WP10410-5M (uncoated)	-	-	-	-	-	-	
						WP10411-3M (uncoated)	W00010740 (uncoated)	W00010741 (uncoated)	-	-	-	-	-	-	
						WP10422-3M (blue)	WP10422-4M (blue)	WP10422-5M (blue)	WP10419-3M (red)	WP10419-4M (red)	WP10419-5M (red)	-	-	-	
						W00010745 (yellow)	W00010746 (yellow)	W00010747 (yellow)	-	-	-	-	-	-	

Original equipment parts

5 Isolating washer **To order** WP10450-L77

ZIRCONIUM CONTACT TIP

LGS2 MIG/MAG torches can be equipped with CuCrZr contact tips that bring excellent performances compared to standard copper contact tips (Cu).

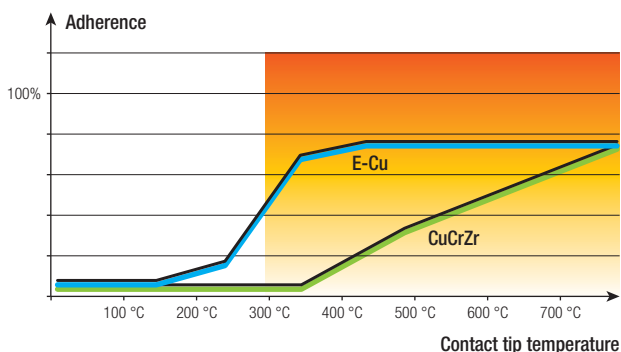
The wear:

The electrical conductivity being superior in a CuCrZr alloy, the arc transfer will meet less resistance and the contact tip will wear out less rapidly.

The lifetime:

The mechanical and thermal resistances also being superior to a copper alloy, the constraints, especially due to the wire friction and to the arc temperature, will be better tolerated with a CuCrZr contact tip.

Used in robotic welding for these advantages, the CuCrZr contact tip can improve the manual MIG/MAG welding performances as well.



Torch model	Screw thread	Wire diameter (mm)	To order
LGS2 150 G / LGS2 240 G	M6 x 25	0.8	WP10440-08C
		1.0	W000010825
		1.2	WP10440-12C
LGS2 250 G	M6 x 28	0.8	W000010830
		1.0	W000010831
		1.2	W000010832
LGS2 360 G / LGS2 505 W	M8 x 30	0.8	W000010840
		1.0	W000010841
		1.2	W000010842
		1.32	WP10445-132C
		1.6	W000010843

MAINTENANCE BOXES

MIG-BOX for LGS2

The storage you were missing !



Features:

- ◆ Dimensions 36 x 24 x 5 cm.
- ◆ Plastified pieces guide included.
- ◆ Until 80 consumables.

Features & benefits:

- ◆ No more losses.
- ◆ All the pieces on hand.
- ◆ Wear parts compatible with the most common standard in Europe.
- ◆ Ready-to-use.



MIG-BOX LGS2 150G

To order W000387234

MIG-BOX LGS2 240G

To order WP10429-K240

MIG-BOX LGS2 250G

To order W000387235

MIG-BOX LGS2 360G

To order W000387236

MIG-BOX LGS2 505W

To order W000387237